



# SOCIAL CONNECTIONS: TRAINERS FOR E-SOCIAL WORK

Curriculum to teach e-social work

Project Number: 2021-1-ES01-KA226-VET-095080

*The European Commission support for the production of this publication does not constitute an endorsement of the contents which reflect the views only of the authors, and the Commission cannot be held responsible for any use which may be made of the information contained therein.*

# 1. PROFESSIONAL ENGAGEMENT

1.1. Reflective practice

1.2. Professional collaboration – collaboratively  
sharing and innovating pedagogic practices

# 1.1. Reflective practice

## Development of social work educators' own digital pedagogical practice



Social work practice is driven by theory, but the educators can also collect informal knowledge or experiential wisdom from working with people in practice.



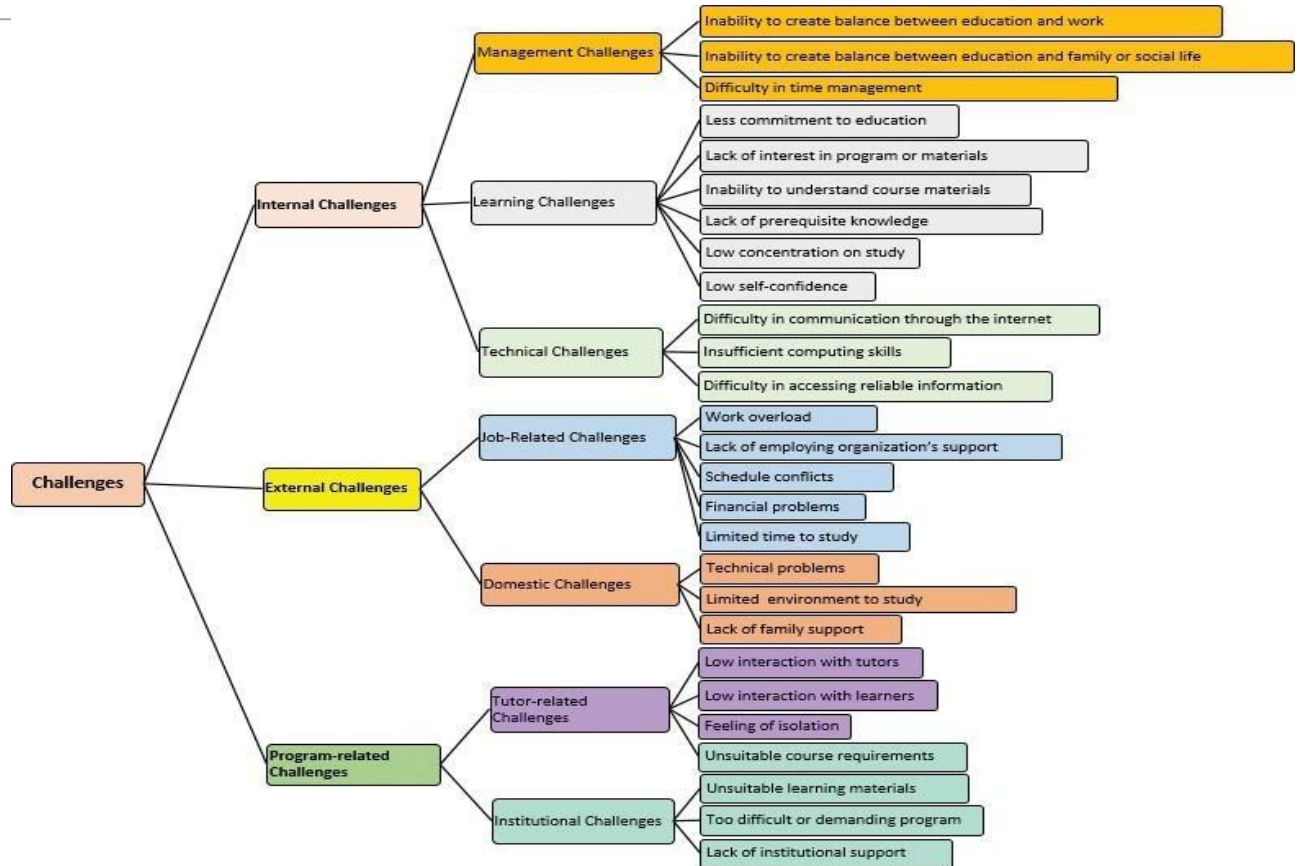
**Reflection and reflective practice** are helping trainers to integrate theoretical learning, whether formal or informal into the social workers' practice.

# Online challenges

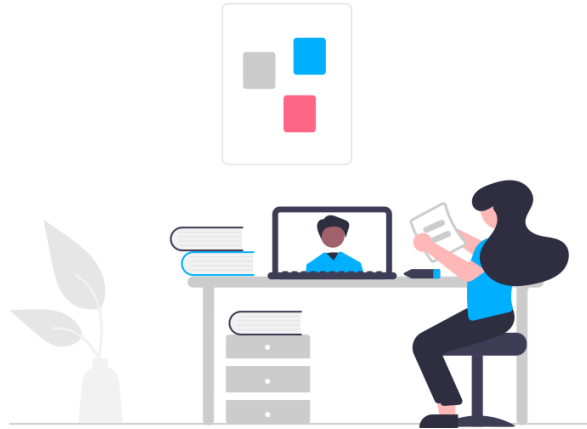
- Cameras not working/ people who do not wish to be visible.
- Issues with Skype or Zoom.
- Some persons may have unique learning needs and styles that make distance and online education difficult.
- People who monopolize the discussion/ people who do not wish to participate.
- The impossibility to read correctly the body language information and the risk of misinterpreting other's intentions.
- The risk of providing a linear teaching that is perceived as boring.
- Internet connection issues.
- Confidentiality challenges.



# Main difficulties in online teaching



*“Techies don’t necessarily make the best online instructors. An interest in pedagogy should come first, technology second.”*



# The social worker's objectives

- Clear
- Learner-centered and worthy
- Measurable and precise

## Tips!

Use action verbs so that the learning process is explicit to the learners and communicate to them the kind of intellectual effort that is expected.



## 1.2. Professional collaboration – collaboratively sharing and innovating pedagogic practices

Use digital technologies to engage in collaboration with other educators.

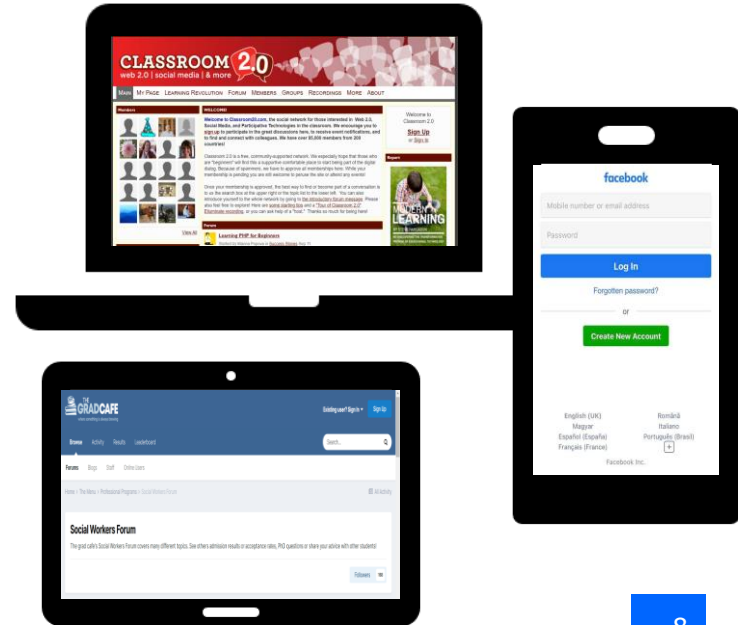


*Technology can empower educators to become co-learners with their students by building new experiences and deepening the exploration of content, thus enhancing the learning experience.*



# Collaboration platforms for educators

- Classroom 2.0: exchanging knowledge about digital practices.
- Social Workers Forum: look for existing topics on social work or create new ones.
- Social networks: Facebook, Twitter, LinkedIn, Reddit, etc. - create groups of professionals working on the same field and encourage the exchange of information.



## Use digital technologies to share and exchange knowledge and experience.



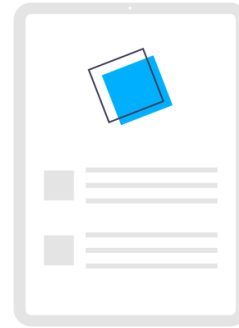
[EPALE resource centre](#): a bank of materials related to adults' education best practices and reference documents.



[Erasmus+ project results platform](#): discover educators' work and exchange information.



[International Federation of Social Workers](#): information related to social work in the whole world: news, policies, reports, events, publications, etc.





Project partners:



Project Number: 2021-1-ES01-KA226-VET-095080

*The European Commission support for the production of this publication does not constitute an endorsement of the contents which reflect the views only of the authors, and the Commission cannot be held responsible for any use which may be made of the information contained therein.*